

NOTES ON THE ORIENTAL SYRPHIDÆ.

By E. BRUNETTI.

PART I.

[Owing to delay in the receipt of the MS. it has been found necessary to postpone the publication of this paper until the next number of these "Records" appears. As the plates have been already printed, however, they are issued now, with the Author's bare references to the figures.—ED.]

EXPLANATION OF PLATES XI, XII AND XIII.

PLATE XI.

- FIG. 1.—*Paragus luteus*, Bru., sp. nov., ♀.  
 ,, 2.—*Eriozona ruficauda*, Bru., sp. nov., ♀.  
 ,, 3.—*Baccha robusta*, Bru., sp. nov., ♂ ♀. Abdomen.  
 ,, 4.— Id. Head.  
 ,, 5.—*B. nigricosta*, Bru., sp. nov. Wing.  
 ,, 6.—*B. tinctipennis*, Bru., sp. nov. Wing.  
 ,, 7.—*Rhingia laticincta*, Bru., sp. nov. ♂ ♀. Abdomen.  
 ,, 8.— Id. var. ♂ ♀. Abdomen.  
 ,, 9.—*Volucella nubeculosa*, Macq. Abdomen.  
 ,, 10.— Id. Wing.  
 ,, 11.—*V. basalis*, Bru., sp. nov., ♀. Abdomen.  
 ,, 12.— Id. Wing.  
 ,, 13.—*V. ruficauda*, Bru., sp. nov., ♂ ♀.  
 ,, 14.—*Lycastris albipes*, Wlk. ♂.  
 ,, 15.— Id. Wing.  
 ,, 16.—*L. flavohirta*, Bru., sp. nov., ♂. Abdomen.  
 ,, 17.— Id. Wing.

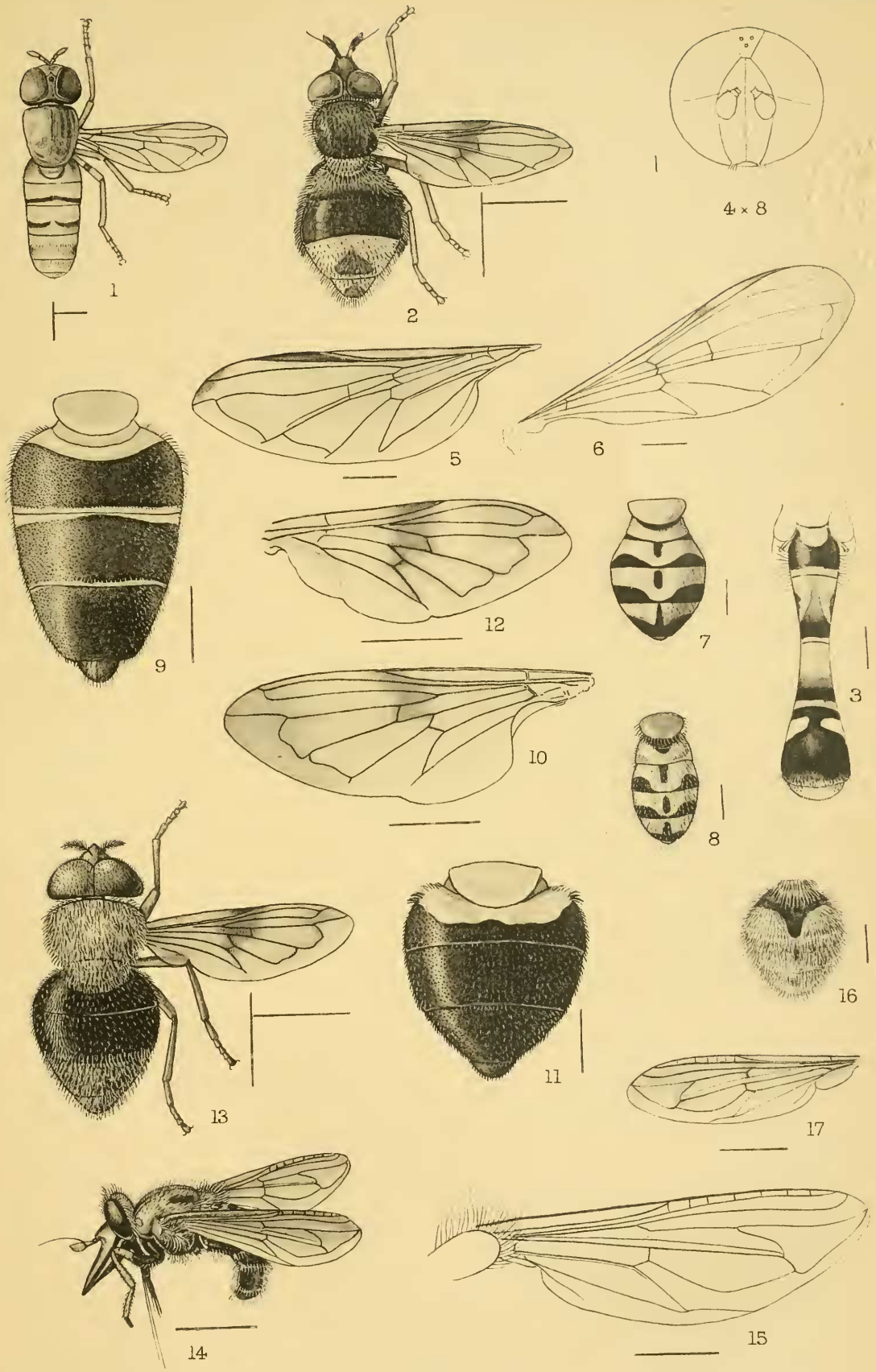
PLATE XII.

- FIG. 1.—*Helophilus quadrivittatus*, Wied., ♂. Abdomen.  
 ,, 2.— Id. ♀. Id.  
 ,, 3.— Id. var. ♀. Id.  
 ,, 4.—*H. bengalensis*, Wied. ♂. Id.  
 ,, 5.— Id. ♀. Id.  
 ,, 6.— Id. var. ♀. Id.  
 ,, 7.—*H. insignis*, Dol ♂. Id.  
 ,, 8.— Id. ♀. Id.  
 ,, 9.— Id. Posterior leg.  
 ,, 10.—*H. sp.?* ♀. Abdomen.

- FIG. 11.—*H. sp.* near *pilipes*, Dol. ♂. Abdomen.  
 ,, 12.— Id. Anterior, middle and posterior leg.  
 ,, 13.—*H. sp.*, ♀. Abdomen.  
 ,, 14.— Id. Anterior middle and posterior leg.  
 ,, 15.—*H. aënous*, Bru., sp. nov., ♀.  
 ,, 16.—*H. tuberculatus*, Bru., sp. nov., ♂ ♀. Abdomen.  
 ,, 17.— Id. Middle leg.  
 ,, 18.—Bigot's "*H. pilipes*, Dol.," ♂. Abdomen in profile.  
 ,, 19.— Id. Anterior leg.  
 ,, 20.— Id. Middle leg.  
 ,, 21.—*H. sp.*, ♀. Abdomen.

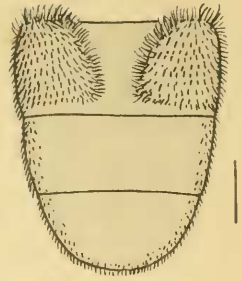
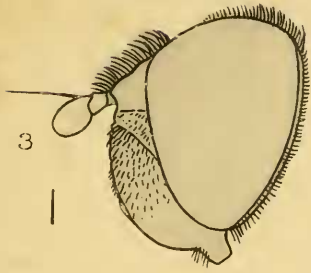
## PLATE XIII.

- FIG. 1.—*Azpeytia bifascia*, Bru., sp. nov., ♂. Abdomen.  
 ,, 2.— Id. Wing.  
 ,, 3.— Id. Head.  
 ,, 4.— Id. Thorax and scutellum.  
 ,, 5.— Id. Posterior leg.  
 ,, 6.—*Sericomyia himalayensis*, Bru., sp. nov., ♂.  
 ,, 7.— Id. Antenna.  
 ,, 8.— Id. Posterior leg.  
 ,, 9.—*Chrysotoxum sexfasciatum*, Bru., sp. nov., ♀.  
 ,, 10.—*Microdon annandalei*, Bru., sp. nov., ♂.  
 ,, 11.—*M. ruficaudus*, Bru., sp. nov., ♀.  
 ,, 12.—*Ceria obscura*, Bru., sp. nov., ♀.  
 ,, 13.—*C. compacta*, Bru., sp. nov., ♀.

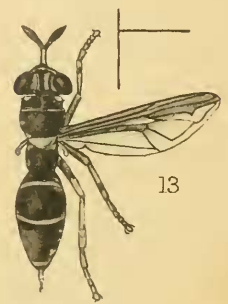
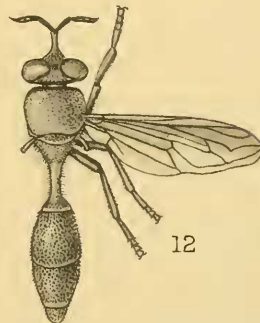
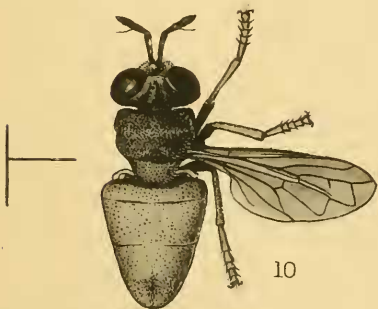
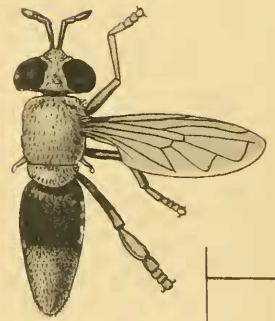
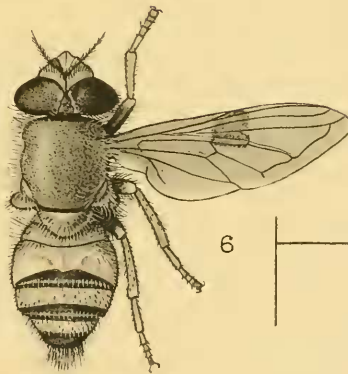
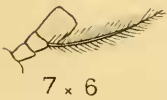
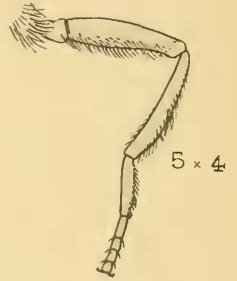
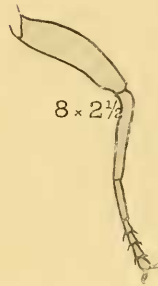
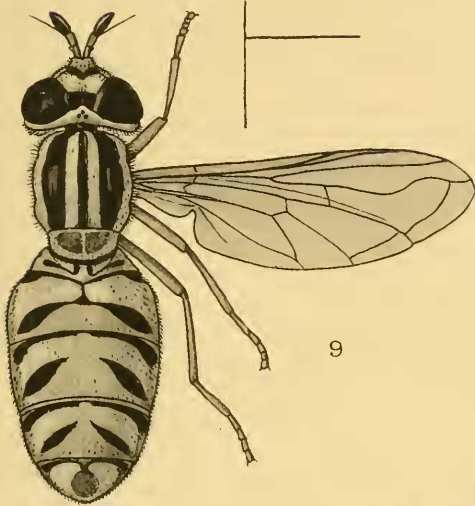


A C. Chowdhary, del.

ORIENTAL SYRPHIDÆ.



1 x 4



A C. Chowdhary, del.

ORIENTAL SYRPHIDÆ.